



PRETRIAL SERVICES AGENCY  
for the DISTRICT of COLUMBIA

CLIFFORD T. KEENAN, Esq.  
Director

LESLIE C. COOPER, Esq.  
Deputy Director

633 Indiana Avenue, NW  
Suite 1120  
Washington, DC 20004

(202) 220-5500

www.PSA.gov

**MEMORANDUM**

TO: Interested Parties

FROM: Clifford T. Keenan *Clifford T. Keenan*

DATE: March 10, 2017

RE: **February 2017 Drug Testing Statistics**

Drug testing of adult arrestees for February 2017 increased by 6% in the overall positive test rate. PCP use increased by 2% compared to last month.

If you have any questions or need additional information, please contact us at [contact@psa.gov](mailto:contact@psa.gov). Historical reports dating to 1996 can be accessed at [www.psa.gov](http://www.psa.gov) in the Reading Room, which can be accessed under the "Resources" tab.

The breakdown of February 2017 adult test results is as follows:

No. Tests/No. Positive	January 2017		February 2017	
	As % of All Tests	As % of All Positives	As % of All Tests	As % of All Positives
Multi-Drug Positive	78 (5%)	78 (23%)	79 (6%)	79 (20%)
Cocaine Positive	180 (12%)	180 (54%)	198 (14%)	198 (51%)
Opiates Positive	82 (5%)	82 (24%)	96 (7%)	96 (25%)
Amphetamines Positive	27 (2%)	27 (8%)	28 (2%)	28 (7%)
PCP Positive	108 (7%)	108 (32%)	131 (10%)	131 (34%)
Heroin Positive	9 (1%)	9 (3%)	12 (1%)	12 (3%)
Synthetic Cannabinoid Positive	3 (<1%)	3 (1%)	1 (<1%)	1 (<1%)

February 2017 Tests	
All Negative	982 72%
Any Positive	389 28%
Total	1371 100%

EXECUTIVE COMMITTEE

HON. ERIC T. WASHINGTON  
Chair  
Chief Judge  
District of Columbia  
Court of Appeals

HON. MERRICK B. GARLAND  
Chief Judge  
United States Court of Appeals  
for the District of Columbia  
Circuit

HON. BERYL A. HOWELL  
Chief Judge  
United States District Court  
for the District of Columbia

HON. ROBERT E. MORIN  
Chief Judge  
Superior Court of the  
District of Columbia

HON. NANCY M. WARE  
Director  
Court Services and  
Offender Supervision Agency  
for the District of Columbia

HON. CHANNING D. PHILLIPS,  
ESQ.  
United States Attorney  
for the District of Columbia

AVIS E. BUCHANAN, ESQ.  
Director  
Public Defender Service  
for the District of Columbia

**February 2017 Juvenile Drug Testing Statistics**

The positive rate for juvenile drug testing for February 2017 (both lockup and community cases) increased by 2% compared to last month.

	<b>January 2017</b>		<b>February 2017</b>	
Number Tested/ Number Positive	74/30	(41%)	99/43	(43%)
Multi-Drug Positive	0	(0%)	0	(0%)
Cocaine Positive	0	(0%)	0	(0%)
Marijuana Positive	30	(41%)	43	(43%)
PCP Positive	0	(0%)	0	(0%)

The Juvenile Drug Testing Unit tested 99 respondents prior to their appearance in February 2017. Of the 99 lockup cases, 43 (43%) tested positive for marijuana. No community cases were tested for the month of February.

	<b>Community</b>		<b>Lockup</b>		<b>Combined</b>	
All Negative	0	(0%)	56	(57%)	56	(57%)
Any Positive	0	(0%)	43	(43%)	43	(43%)
Total	0	(0%)	99	(100%)	99	(100%)

	<b>Of the 0 Community Cases</b>		<b>Of the 99 Lockup Cases</b>		<b>Of the 99 Combined Cases</b>		<b>Of the 43 Positive Cases</b>	
Multi-Drug Positive	0	(0%)	0	(0%)	0	(0%)	0	(0%)
Cocaine Positive	0	(0%)	0	(0%)	0	(0%)	0	(0%)
Marijuana Positive	0	(0%)	43	(43%)	43	(43%)	43	(100%)
PCP Positive	0	(0%)	0	(0%)	0	(0%)	0	(0%)

The following breakdown of age groups for both community and lockup cases was obtained through the Superior Court's records system, and correlated with the respondent's test result information.

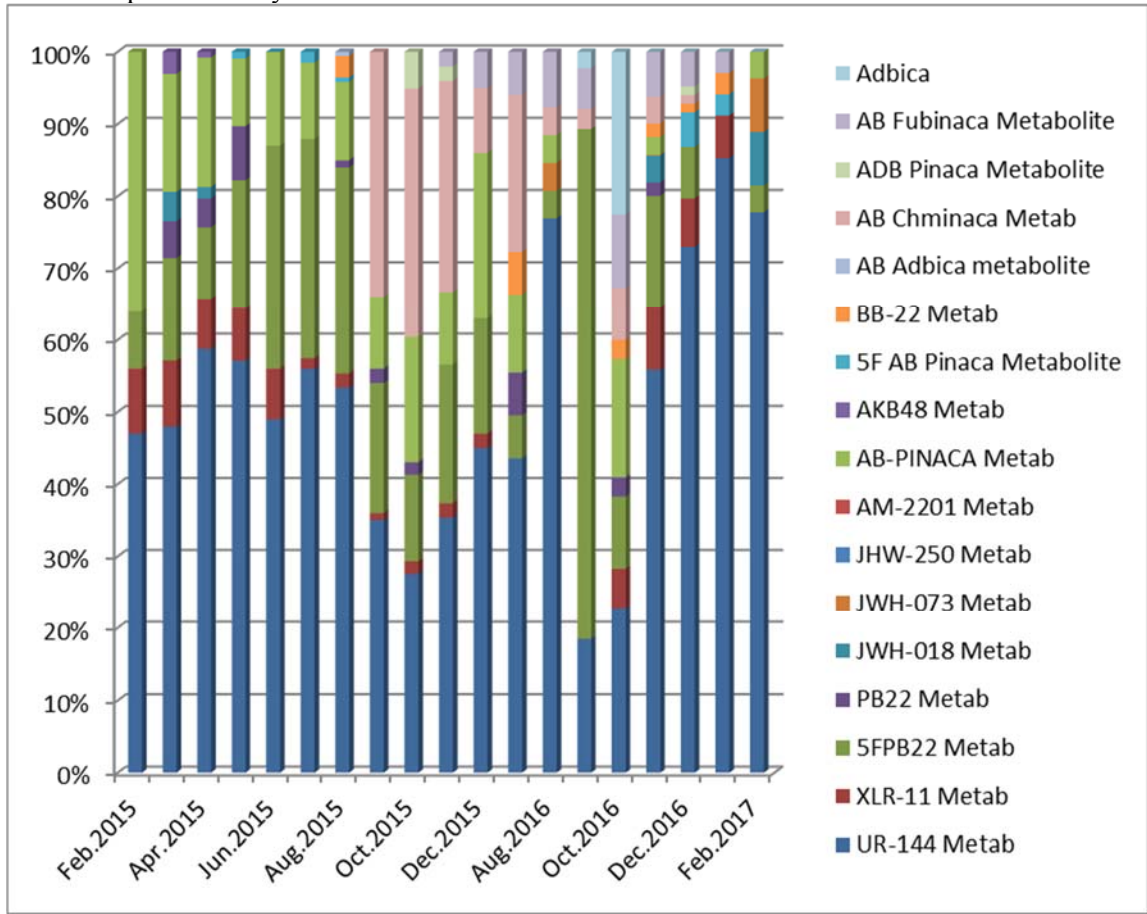
<b>Age</b>	<b>Number of Arrestees Tested</b>	<b>Number Positive for Any</b>	<b>% Positive for Any Drug</b>
8	0	0	0%
9	0	0	0%
10	1	0	0%
11	0	0	0%
12	2	1	50%
13	8	0	0%
14	21	6	29%
15	25	9	36%
16	21	13	62%
17	16	9	56%
18-19	5	5	100%
Totals	99	43	43%

### Synthetic Cannabinoid Testing Results for February 2017\*

February 2017		
Positives	22	73%
Negatives	8	27%
Total	30	100%

	Number of Positives	Percentage of total samples	Percentage of Positive Samples
UR-144 Metabolites	21	70.00%	75.00%
5FPB22 Metabolites	1	3.33%	3.58%
AB Fubinaca Metabolite	1	3.33%	3.58%
JWH018	2	6.67%	7.14%
JWH073	2	6.67%	7.14%
AB Pinaca Metabolites	1	3.33%	3.58%

Tests were performed by LC/MS/MS.



\* These samples were obtained from the pretrial, parole/probation, and juvenile populations. The samples have been preselected by staff or court for testing due to suspected use by the contributor.

### Drug Testing of Adult Arrestees March 2016 - February 2017

